



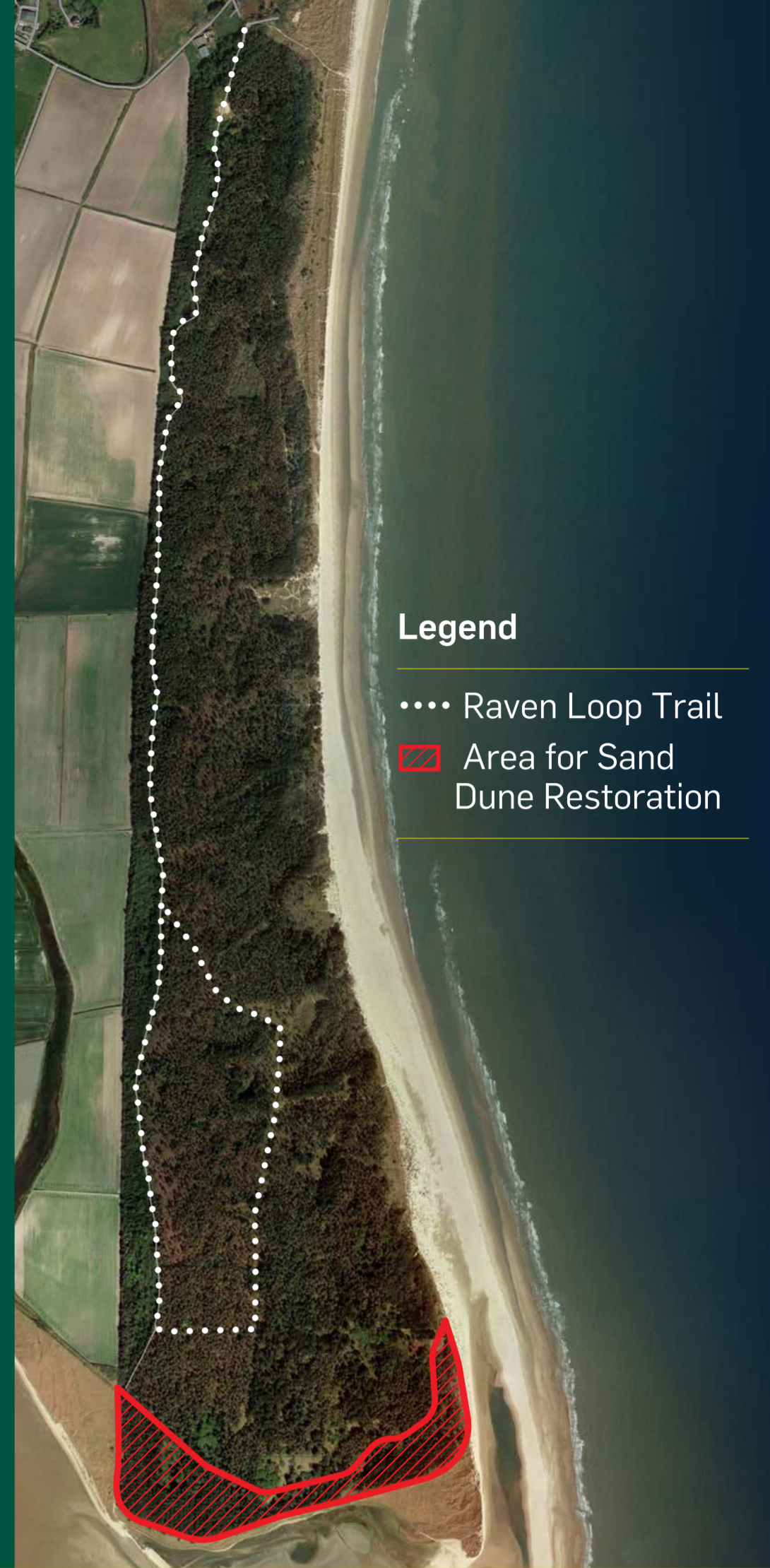
Scan to watch:
Meet the People Working on
Nature Restoration at The
Raven Nature Reserve

Sand Dune Restoration at The Raven

Sand dunes are beautiful natural places that are home to many types of plants and animals. What's more, they help us by providing a recreational amenity, reducing the impacts of storms on the coast and giving refuge to pollinators.

Here at The Raven, the woodland will be managed on a long-term basis to ensure that it remains a valuable habitat for wildlife, as well as a place for people to enjoy.

As part of the EU LIFE Insular project an area at the southern tip of the reserve, marked in red on the map, has been identified as most suitable for sand dune restoration and conservation.



Legend

- Raven Loop Trail
- ▨ Area for Sand Dune Restoration

What works will take place at The Raven Autumn 2023 - Spring 2024?

The majority of the tree felling for this project took place in early Spring 2023. A few small remaining sections will be felled in the Autumn of 2023 and all the remaining brash (branches) will be removed.

In some areas where the trees have been removed, the top layer of soil and leaves/needles will be removed during the winter. This exposes the sand beneath and provides the best conditions for dune restoration.

This top layer of soil will be spread in areas of the site that have been identified as having lower biodiversity value.

Over time we expect to see sand dune plants growing back in the place of trees. In Spring 2024 marram grass will be planted in some places to help kick-start the process. Re-seeding of dune plants may also be carried out in Summer of 2024 depending on the level of natural plant growth.

Monitoring will take place in 2024 and in subsequent years to assess the impact of the works. This project is being carried out to improve the long-term natural value of The Raven Nature Reserve.



Please take care while works are being carried out and watch out for timber lorries.

Most access will remain open but some trails may be temporarily diverted with access restricted.

When trees were first planted at The Raven, it was thought that they might reduce erosion and stabilise the dunes. However we now know that this is not the case and that sand dunes by their nature are dynamic systems which naturally change over time.

Over 2022 a detailed ecology survey was carried out, as well as visitor surveys, interviews and consultation walks at this site. With this information, a detailed management plan was developed for this site, with works starting in early 2023.

In Ireland LIFE Insular is being managed as a collaboration between the National Parks and Wildlife Service (NPWS) and Coillte Nature. The Raven is part of a Special Area of Conservation and works are being carried out to have a long-term benefit for nature.